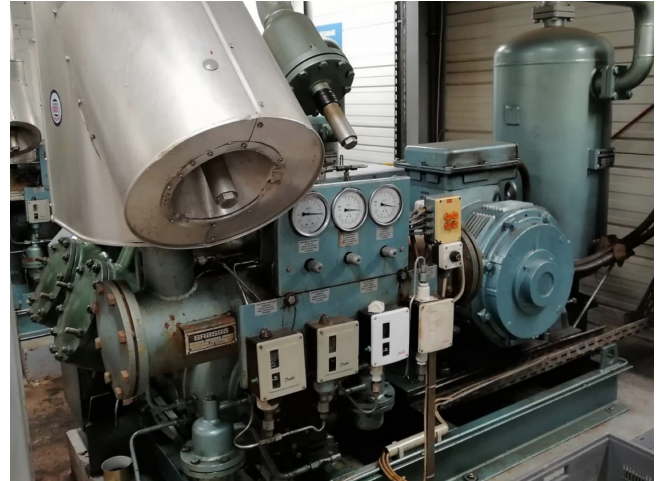


Grasso RC 611 Compressor package

Specifications

Marka	Grasso
Typ	RC 611 Compressor package
Czynnik chłodzący	NH 3 (ammonia)
kW at +10°C/+40°C	990,1
kW at 0°C/+40°C	662,8
kW at -5°C/+40°C	532,3
kW at -10°C/+40°C	418,5
Silnik elektryczny Specs	Schorch 50Hz / 132 kW / 1475 RPM
Podstawa na stalowej ramie	✓
Ciśnieniowe przełączniki bezpieczeństwa	✓
Wskaźniki ciśnienia	✓
Separator oleju	✓
Okno widokowe	✓
Uwagi	y.o.b. 1991
Package / Rack	✓
Rozmiary	3700x1600x2400 mm
Stock	1



Description

Used Grasso RC 611 Compressor package

Used Grasso RC 611 compressor unit V-belt driven. Complete with electromotor Schorch 50Hz - 132 kW - 1475 RPM. Oil separator 321 ltr. Pressure safety switches and gauges. Cooling capacity is based on a different electromotor. The electromotor can be delivered in different capacity versions. *Why choose for HOSBV? Were not only the largest used refrigeration specialist in Europe, but also, we deliver all equipment including an extensive test, warranty and industrial cleaning. *Optional we can also arrange the logistics.

